

**-GENERAL NOTES-**

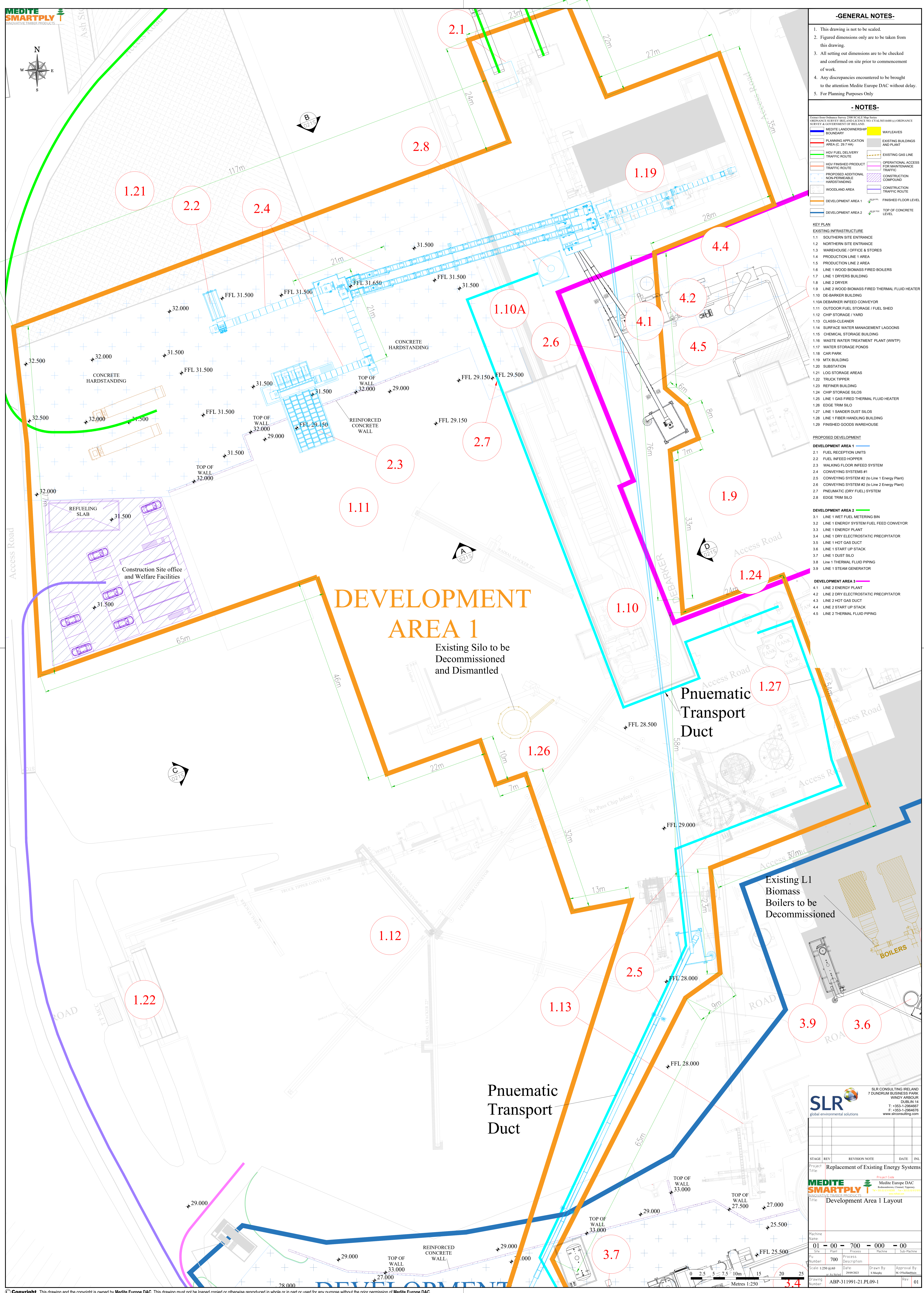
1. This drawing is not to be scaled.
2. Figured dimensions only are to be taken from this drawing.
3. All setting out dimensions are to be checked and confirmed on site prior to commencement of work.
4. Any discrepancies encountered to be brought to the attention of Medite Europe DAC without delay.
5. For Planning Purposes Only.

**-NOTES-**

- Planning Application No. 2019/2467/01
- Medite Landownership
- Medite Landownership Boundary
- Planning Application Area (c. 29.7 Ha)
- HOV Fuel Delivery Traffic Route
- HOV Finished Product Traffic Route
- Proposed Additional Non-Permeable Hardstanding
- Woodland Area
- Development Area 1
- Development Area 2
- Wayleaves
- Existing Buildings and Plant
- Existing Gas Line
- Operational Access for Maintenance Traffic
- Construction Compound
- Construction Traffic Route
- Finished Floor Level
- Top of Concrete Level

- KEY PLAN**
- EXISTING INFRASTRUCTURE
- 1.1 SOUTHERN SITE ENTRANCE
  - 1.2 NORTHERN SITE ENTRANCE
  - 1.3 WAREHOUSE / OFFICE & STORES
  - 1.4 PRODUCTION LINE 1 AREA
  - 1.5 PRODUCTION LINE 2 AREA
  - 1.6 LINE 1 WOOD BIOMASS FIRED BOILERS
  - 1.7 LINE 1 DRYERS BUILDING
  - 1.8 LINE 2 DRYER
  - 1.9 LINE 2 WOOD BIOMASS FIRED THERMAL FLUID HEATER
  - 1.10 DE-BARKER BUILDING
  - 1.10A DE-BARKER INFEEED CONVEYOR
  - 1.11 OUTDOOR FUEL STORAGE / FUEL SHED
  - 1.12 CHIP STORAGE / YARD
  - 1.13 TRUCK TIPPER
  - 1.14 SURFACE WATER MANAGEMENT LAGOONS
  - 1.15 CHEMICAL STORAGE BUILDING
  - 1.16 WASTE WATER TREATMENT PLANT (WWTP)
  - 1.17 WATER STORAGE PONDS
  - 1.18 CAR PARK
  - 1.19 MTX BUILDING
  - 1.20 SUBSTATION
  - 1.21 LOG STORAGE AREAS
  - 1.22 TRUCK TIPPER
  - 1.23 REFINER BUILDING
  - 1.24 CHIP STORAGE SILOS
  - 1.25 LINE 1 GAS FIRED THERMAL FLUID HEATER
  - 1.26 EDGE TRIM SILO
  - 1.27 LINE 1 SANDER DUST SILOS
  - 1.28 LINE 1 FIBER HANDLING BUILDING
  - 1.29 FINISHED GOODS WAREHOUSE

- PROPOSED DEVELOPMENT**
- DEVELOPMENT AREA 1**
- 2.1 FUEL RECEPTION UNITS
  - 2.2 FUEL INFEEED HOPPER
  - 2.3 WALKING FLOOR INFEEED SYSTEM
  - 2.4 CONVEYING SYSTEMS #1
  - 2.5 CONVEYING SYSTEM #2 (to Line 1 Energy Plant)
  - 2.6 CONVEYING SYSTEM #2 (to Line 2 Energy Plant)
  - 2.7 PNEUMATIC (DRY FUEL) SYSTEM
  - 2.8 EDGE TRIM SILO
- DEVELOPMENT AREA 2**
- 3.1 LINE 1 WET FUEL METERING BIN
  - 3.2 LINE 1 ENERGY SYSTEM FUEL FEED CONVEYOR
  - 3.3 LINE 1 ENERGY PLANT
  - 3.4 LINE 1 DRY ELECTROSTATIC PRECIPITATOR
  - 3.5 LINE 1 HOT GAS DUCT
  - 3.6 LINE 1 START UP STACK
  - 3.7 LINE 1 DUST SILO
  - 3.8 LINE 1 THERMAL FLUID PIPING
  - 3.9 LINE 1 STEAM GENERATOR
- DEVELOPMENT AREA 3**
- 4.1 LINE 2 ENERGY PLANT
  - 4.2 LINE 2 DRY ELECTROSTATIC PRECIPITATOR
  - 4.3 LINE 2 HOT GAS DUCT
  - 4.4 LINE 2 START UP STACK
  - 4.5 LINE 2 THERMAL FLUID PIPING



**DEVELOPMENT AREA 1**

Existing Silo to be Decommissioned and Dismantled

Pneumatic Transport Duct

Existing L1 Biomass Boilers to be Decommissioned

Pneumatic Transport Duct

**SLR**  
global environmental solutions

SLR CONSULTING IRELAND  
7 DUNDRUM BUSINESS PARK  
WINDY ARBOUR  
DUBLIN 14  
T: +353-1-2964677  
F: +353-1-2964678  
www.slrconsulting.com

STAGE	REV	REVISION NOTE	DATE	INTL	
Project		Replacement of Existing Energy Systems			
Project		Development Area 1 Layout			
Machine					
Site	01	00	700	000	00
Plant					
Process					
Machine					
Sub-Machine					
Scale	1:250 @ A0	Date	29/09/2023	Drawn By	M. O'Sullivan
Drawn					
Checked					
Approved					
Drawing	ABP-311991-21.PL09-1				
Revision					01